



The University of  
Nottingham

UNITED KINGDOM • CHINA • MALAYSIA

## IN THIS ISSUE:

- Report from our October meeting
- Update on the Midwife Units project
- Update on the project to develop guidelines for care in labour
- Anaemia in pregnancy
- Meet Kerry Evans, new research team member!

Nottingham Maternity Research Network aims to include the views of a range of local maternity service users. If you know anyone who might be interested in joining us, you can give them our email address or direct them to the website. We'll be happy to hear from them!



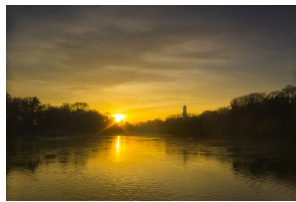
Join us on Facebook - just search for Nottingham Maternity Research Network and hit the like button!

# Nottingham Maternity Research Network

VOLUME 3 ISSUE 4

NOVEMBER 2017

## WELCOME!



A warm welcome to the latest issue of our regular network newsletter. In this edition, you'll find a summary of our latest meeting, which took place in October, updates on current and recently completed projects, and an introduction to the newest member of the research team.

## REPORT ON THE OCTOBER NETWORK MEETING

Network members met at one of our regular venues, the Poppy & Pint in West Bridgford, on October 17th. There was lots to discuss, including:

- A discussion about what topics members would like to see included in guidance on care in labour - more on this project later in the newsletter;
- An introduction to a proposed project looking at anaemia in pregnancy, and discussion of network members' experiences of anaemia and how they thought it might be managed differently;
- A discussion about the use of video calling in early labour, to enhance communication

## MIDWIFERY UNITS STUDY: A REPORT FROM THE PROJECT

### STAKEHOLDER WORKSHOP

The third phase of the Midwifery Units study was held on November 7th at the East Midlands Conference Centre. Designed as a stakeholder workshop, the event exceeded our expectations in what it was able to achieve.

56 stakeholders, representing service users, maternity care professionals, NHS Trust managers, maternity care commissioners and Department of Health strategy representatives attended the event. The project team presented the findings so far, and then seven groups of mixed stakeholders considered, discussed and fed back their responses. These responses will be used to formulate service guidance and recommendations for both maternity care providers and commissioners to address the challenges of barriers that exist in the availability and utilization of midwifery units. The final report from the study is in preparation, and a draft will be available for review in March 2018.

Project lead, Dr Denis Walsh, would like to thank Notts Maternity members for their fabulous contribution to the stakeholder event, which many of the attendees commented upon.

# Royal College of Midwives Project Update: midwifery practice guidance for the care of women in labour

We're working on this project throughout the next year, and it's now well underway and benefitting from the input from members of Notts Maternity. To date, members have provided extremely useful feedback about areas to prioritise for the project, and two members have written a very helpful plain English summary (you can find this in our August 2017 newsletter, available via the Notts Maternity website). Two members of Notts Maternity are also contributing to the Expert Advisory Group for the project, which also includes midwifery clinicians, students, managers and educators, obstetricians, neonatologists, anaesthetists, clinical commissioning groups, and parenting organisations including the NCT, Positive Birth, Birthrights and Parents1st.

Using feedback from Notts Maternity and the Expert Advisory Group, the research team have identified where new evidence about care in labour is required and where evidence already exists but may need summarizing or updating. Four topics to progress have been identified, and these have been reported back to the Royal College of Midwives. We're awaiting their feedback, and we look forward to sharing this at the next network meeting.

In the meantime, you can find out more about the project by visiting this webpage: <http://www.nottingham.ac.uk/research/>

## Anaemia in pregnancy



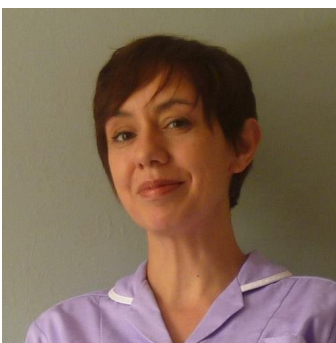
At the October network meeting, we were joined by Simon Stanworth, a haematologist. He is working with a broader group of researchers, including Helen Spiby, and shared some ideas related to anaemia in pregnancy; specifically, how much this matters to women and whether anaemia can be prevented.

In a lively discussion, members of the group provided very useful feedback on what was important to them about anaemia, and offered issues to think about in designing research that might fit in with usual pregnancy care and avoid additional burden for women taking part in a study.

Anyone with an interest in this topic who may be interested in joining an advisory group to help the project team, please contact Helen to find out more: [helen.spiby@nottingham.ac.uk](mailto:helen.spiby@nottingham.ac.uk)

## Meet a Member of the Network

### Kerry Evans, Research Associate



I've been a midwife at Nottingham since 2004 and I still work on labour suite one day per week. I've been interested in midwifery research since my student days, and have undertaken various research-focused academic courses over the years. I

started my doctoral study in 2014, sparked by my interest in women's mental health during pregnancy, and will be submitting my thesis at the end of this year. Members of Notts Maternity helped me to develop this research - the feedback I received from consultation work was extremely valuable, and it influenced the design of the intervention used in the study.

I've been employed as a research associate in the Division of Midwifery since November, working on the RCM Care in Labour Guidelines project. I'm getting to know everyone at the moment, and I'm looking forward to working with Notts Maternity members throughout this exciting project.

*Season's Greetings and best wishes for 2018 from all at the Maternal Health Research Group!*

Get in Touch, Spread the Word!

Visit our website: [www.nottsmaternity.ac.uk](http://www.nottsmaternity.ac.uk)

Email us at: [HS-nottsmaternity@nottingham.ac.uk](mailto:HS-nottsmaternity@nottingham.ac.uk)