



The University of Nottingham

UNITED KINGDOM · CHINA · MALAYSIA

Nottingham Maternity Research Network

VOLUME 2 ISSUE 2

JULY 2016

IN THIS ISSUE:

- Funding awarded to the Network
- Report on training event for Network members
- Meet a network member: Leanne Stamp

Nottingham Maternity Research Network aims to include the views of a range of local maternity service users. If you know anyone who might be interested in joining us, you can give them our email address or direct them to the website. We'll be happy to hear from them!

NEXT MEETING:

Autumn 2016

Date to be confirmed

Welcome!

A warm welcome to the latest issue of our regular Network newsletter. Here you'll find news of a funding award for the Network, a report from our recent training event, and our regular feature 'Meet a Network member'!



Notts Maternity receives award from East Midlands

Academic Health Sciences Network (EMAHSN)

Nottingham Maternity Research Network is one of eight 'Patient and Public Involvement' (PPI) groups in the East Midlands to be awarded £1,500 each to help meet essential running costs and continue vital work to promote patient, carer and public involvement in healthcare or healthcare research.

This funding will support the next phase of developing the Network with a particular focus on trying to grow our membership and reach under-served communities and women who may not typically engage in research. Having previously drawn largely on members from the Nottingham area, we plan outreach activities in the wider Nottinghamshire area (including Mansfield, Worksop and Newark). We plan to work through community and faith-based groups and existing Network members to develop materials and activities to appeal to and engage with more women. Melissa Thomas and Julie Roberts attended a launch event recently to meet the other groups who had been awarded funding and exchange ideas. We'll be contacting members to get involved in outreach activities over the coming months.



A report from the co-facilitators' training workshop, Midwife Units

On 29th June at the University of Nottingham, I attended a workshop along with 3 other service-users and members of the research team, to help us to think about how we are going to facilitate focus groups with new mums.

The day was run by two external trainers and was really enjoyable, and we all left feeling more prepared and confident in our role within the project and looking forward to getting started later this year! It was a great opportunity to get to know everyone better, exchange ideas and to feel like we all contributed to shaping how the focus groups will run. We did several different activities that really got us thinking!

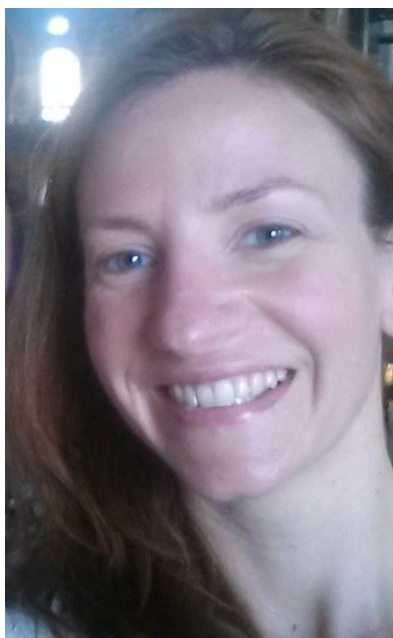
So all in all a really useful day and it was lovely to feel so involved with the project.

Samantha Foulke



Melissa, Dawn, Denis and Samantha at the training workshop

Meet a Member of the Network: Leanne Stamp



I joined the network at its conception (no pun intended!) in 2014. To be honest, in the beginning I didn't really know what it was all about, but it seemed aligned with my passion for ensuring that maternity services meet the needs of the women who use them. Since then, I have come to understand the network as an important and progressive mechanism for involving service users in maternity research – something that historically, hasn't happened very effectively in research.

Last year, I joined the research team for the Midwife Units Project. My role within the team is about providing advice to the researchers on aspects of the project that involve sharing information with women, for example the content of the project website. I will also be co-facilitating focus groups to find out about women's experiences of accessing midwife-led units. It's fascinating to be part of the project as it evolves and to know that I am contributing to research that has the potential to really make a difference for women. The best part of the project so far has been the collaborative working between the researchers and service users; I feel that I am a valued member of the team and that is to the credit of the research team who are fully committed to service user involvement at all stages of the project.

Get in Touch, Spread the Word!

Visit our website: www.nottsmaternity.ac.uk

Email us at: HS-nottsmaternity@nottingham.ac.uk